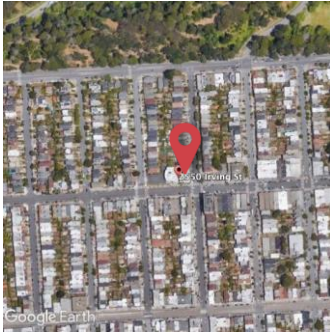


# 2550 IRVING

Between 26<sup>th</sup> & 27<sup>th</sup> Avenues

A Community for Families with Low Incomes

# 2550 IRVING



## Affordable housing is needed in the Sunset

- Over the last decade, **hundreds** of rent-controlled apartments removed from protected status
- Only **17** new affordable units completed in the last 10 years
- Last year, Sunset residents made 4,400 applications for affordable housing and **only 35** received placements

Source: [https://default.sfplanning.org/publications\\_reports/HousingBalance10-202003.pdf](https://default.sfplanning.org/publications_reports/HousingBalance10-202003.pdf), MOHCD

## 2550 Irving Development Goals

- To prevent families from being displaced by increasing the amount of family-friendly affordable homes in the Sunset
- To help families with low incomes thrive with stable housing and onsite resources

### Lot Size

19,125 square feet (0.44 acres)

### Proposed Use

Up to 100 residential apartments

### Open Spaces

Rear courtyard, visible green spaces, and more

### Community Spaces

±10,000 SF community space and management offices

### Affordability Levels

- 30% to 80% Area Median Incomes (\$28,000 to \$106,550)
- 25% units reserved for people who were formerly homeless

### Apartment Types

50% or more units will be two and three bedrooms

### Parking

TBD (minimum 11 vehicular spaces & 1:1 bicycle parking)

### Max Height

Up to 7 stories (per zoning)

*"I hope to live here forever. Everyone here is my friend. The building and management is so nice, and it's a wonderful location. I want to thank TNDC for all they do."*

– Connie Moy, TNDC Resident



## 43

Buildings in Operation across San Francisco



## 5800

Tenants Served



## 940

Households that were Formerly Homeless

Learn more about us at [www.tndc.org](http://www.tndc.org)

To find out more information, join the mailing list, or to request a meeting please go to the website: [www.2550Irving.com](http://www.2550Irving.com)

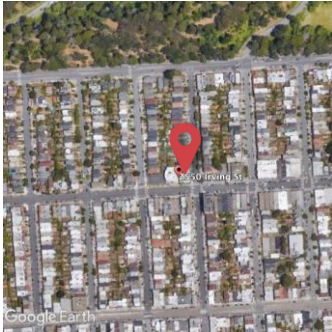
You can also email [2550Irvinginfo@gmail.com](mailto:2550Irvinginfo@gmail.com) or call (415) 735-5514



# 歐文街 (IRVING) 2550 號

這個項目位於歐文街 (IRVING) 上，在 26 和 27 大道之間  
為低收入家庭營建一個社區

2550  
IRVING



## 在日落區需要可負擔住房:

- 在過去十年內，流失了幾百套租金管控的公寓單元
- 在過去十年內只完成了17套新的可負擔公寓單元的營建
- 去年日落區居民呈遞超過4,400份可負擔住房申請書而只有35人得到安置

來源: [https://default.sfplanning.org/publications\\_reports/HousingBalance10-202003.pdf](https://default.sfplanning.org/publications_reports/HousingBalance10-202003.pdf), MOHCD

## 開發目標

- 通過增加日落區內適合家庭居住的可負擔住房防止家庭被迫流離失所
- 幫助低收入家庭因為穩定的住房和現場的資源而蓬勃發展

### 地塊大小

19,125 平方英尺 (0.44公頃)

### 擬議使用

高達100套公寓單元

### 開放空間

后院, 綠地及其他

### 社區空間

±10,000 平方英尺的社區空間和管理辦公室

### 可負擔標準

- 30% 至 80% 本地中位收入 (\$28,000 至 \$106,550)
- 25% 單元預留給曾經無家可歸的人士

### 公寓單元類型

50% 更多單元會是 二室一廳或三室一廳單元

### 停車空間

待定 (最少 11 個停車位及 1比1 腳踏車停放處)

### 高度上限

最高7層 (根據規劃分區規定)

“我希望永遠住在這裡。這裡的每個人都是我的朋友。  
大廈和管理都非常好，地理位置優越。我要感謝  
TNDC 所做的一切。”

- 梅秋賢女士, TNDC居民



在整個舊金山運營

43

棟大廈



服務

5800

名租客



940

個家庭  
曾經無家可歸

有關 TNDC - 請訪問  
[www.tndc.org](http://www.tndc.org)  
以瞭解更多信息

如想瞭解更多資訊，請加入郵寄名單或訪問 [www.2550Irving.com](http://www.2550Irving.com) 要求會面

您還可發電郵至 [2550Irvinginfo@gmail.com](mailto:2550Irvinginfo@gmail.com) 或撥打電話 (415) 735-5514

